

Corporate Emergency Response Plan – AB/NS

Elmworth Energy Corporation

24 Hour Emergency: 403-250-0753

Toll Free: 1-866-307-9476



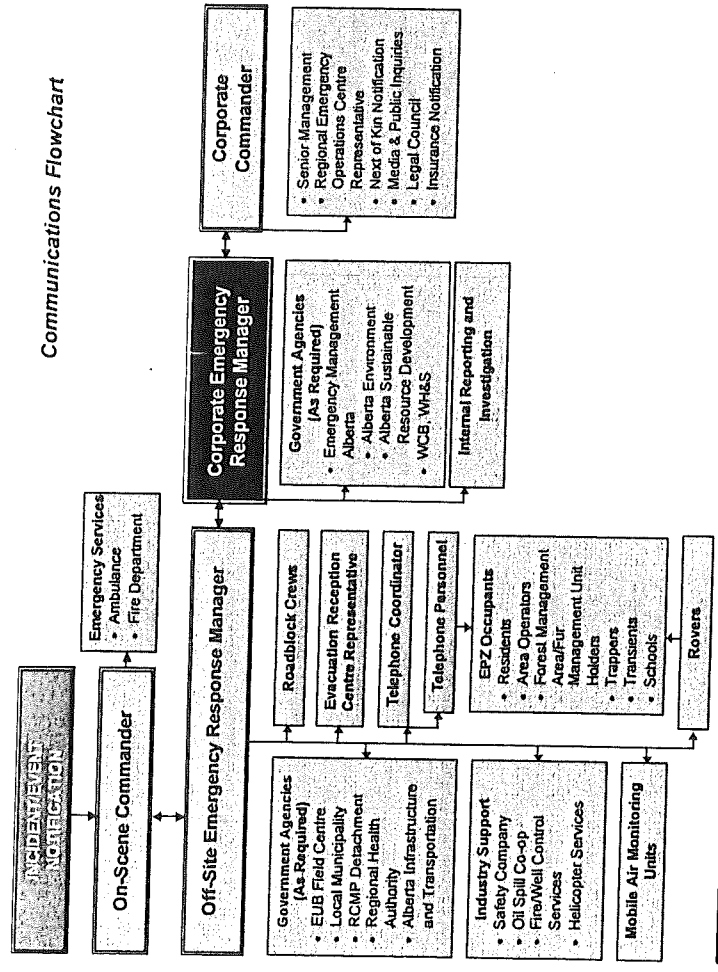
EMERGENCY CRITERIA MATRIX AND RESPONSE

Alert	LEVEL OF EMERGENCY		
	Level 1: Low	Level 2: Medium	Level 3: High
<p>CONTROL</p> <p>Immediate control of hazard is becoming progressively more complex because of deteriorating conditions.</p> <p>Control and relief systems functioning correctly.</p> <p>IMPACT</p> <p>Public/Worker: On-site only</p> <p>Environment: On-site only</p>	<p>CONTROL</p> <p>Immediate control of hazard is imminent and/or intermittent control of the hazard is not possible.</p> <p>Control and relief systems functioning correctly.</p> <p>IMPACT</p> <p>Public/Worker: On-site, with possible impact off-site.</p> <p>Environment: On-site, with some potential off-site. Minor or short term.</p>	<p>CONTROL</p> <p>Imminent control of the hazard is not possible.</p> <p>Key control and relief systems not operational.</p> <p>IMPACT</p> <p>Public/Worker: Potential for public safety to be jeopardized.</p> <p>Environment: On-site, with significant off-site. Long term.</p>	
<p>Minor fire, property damage or accident/injury on location that can be contained, repaired and/or replaced by on-site equipment and personnel.</p>	<p>Fire, explosions or product releases/spill which has the potential to endanger the safety of personnel, reach outside of property, or cause damage to property and equipment.</p>	<p>Major fire or explosion, uncontrolled spill or hazardous product release. Accident resulting in fatality, life-threatening injury, major loss.</p>	
<p>Assess the situation and declare an Alert.</p> <p>Notify On-Site Supervisor. (Notification of the Corporate Emergency Response Team is discretionary, depending on company policy.)</p> <p>Notify EUB Field Centre and local authority, if required, or if public is contacted.</p> <p>Take all reasonable steps to control, isolate and minimize the incident. Place additional personnel and equipment on standby, if required.</p>	<p>Assess the situation, declare a Level 2 Emergency.</p> <p>Perform Level 1 activities if not completed.</p> <p>Notify the EUB Field Centre and local authority, advising of the change in emergency level.</p> <p>Begin evacuation or sheltering of the occupants within the EPZ, if applicable.</p> <p>Prepare for well ignition.</p> <p>Mobilize industry support services (fire fighters, mobile air monitoring, oil spill co-op, safety services), as required.</p> <p>Mobilize on-call and off-duty personnel, as required.</p>	<p>Assess the situation, declare a Level 1 Emergency.</p> <p>Perform Level 1 and 2 activities, if not completed.</p> <p>Notify the EUB Field Centre and local authority, advising of the change in emergency level.</p> <p>Request assistance from government agencies and external support services, as required.</p> <p>Begin/continue evacuation or sheltering of the occupants within the EPZ.</p> <p>Ignite the uncontrolled gas release if ignition criteria are met.</p> <p>Mobilize on-call and off-duty personnel, as required, if not previously completed.</p> <p>Mobilize industry support services, as required, if not previously completed.</p>	

S.20

Elmworth 24 Hour Emergency Telephone: Toll Free - 1-866-307-9476 or Local Call: 403-250-0753

Communications Flowchart



When faced with an emergency situation, certain measures must be taken to ensure the safety and protection of all concerned:

- Do not panic. Assess the situation (determine the problem, extent and action required).
- Evacuate, call for help, and notify Supervisor.
- Call emergency services, as required.
- If applicable, administer first aid to the injured.
- Considering the nature of the emergency, take corrective action to bring the emergency under control.
- The On-Scene Commander will provide the following information to the Off-Site Emergency Response Manager and the Corporate Emergency Response Manager:
 - The nature of the emergency.
 - The location and opinion as to the level (Alert, 1, 2 or 3) of emergency.
 - Name, location and phone number.
 - Action already taken.
 - Action proposed.
- Declare the 'All-Clear Message' when the emergency is completely resolved.

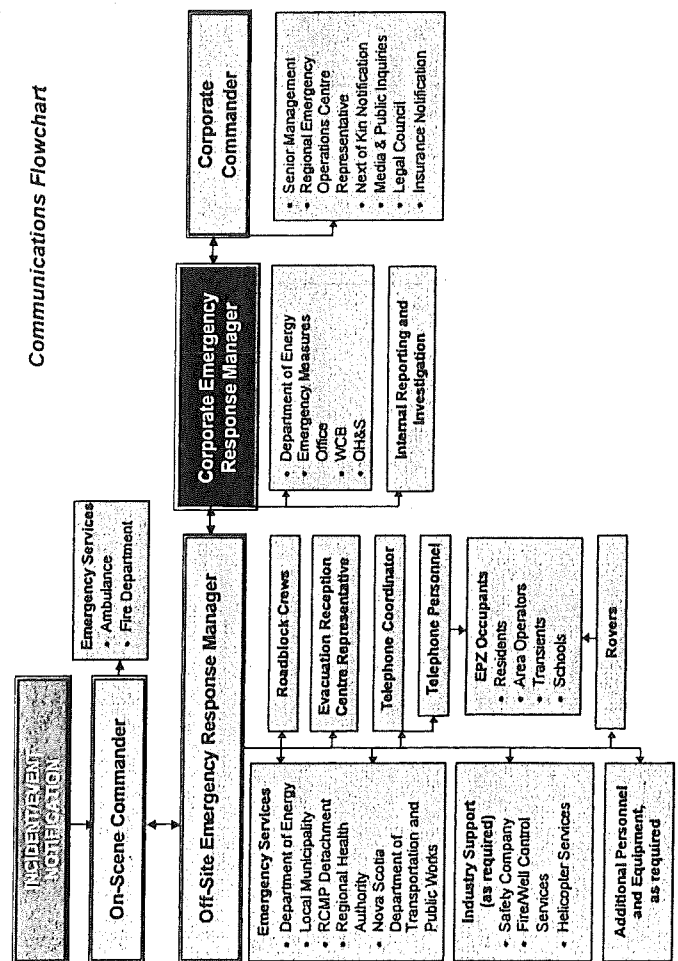
Name	Title	Office	Cellular	Residence
TBD	Off-Site Emergency Response Manager			
Brad Affleck	Corporate Emergency Response Manager Operations Manager			
Troy Wagner	Corporate Commander COO & Vice President, Engineering			
Ron Hietala	Alternate Corporate Contacts President			
Mark Gustafson	CEO			
Aly Khan Musani	CFO			
Andy Prefontaine	Land Manager			
Greg Caswell	Consulting Engineer			
Jim Rasmussen	Drilling Engineer			

Agency	Area	Phone	Fax
Stars Air Ambulance	Provincial	1-888-888-4567 #4567 (from cell)	N/A
Alberta Air Ambulance	Provincial	1-800-561-3822	N/A
Alberta Energy & Utilities Board	Calgary	403-297-8311	403-297-7336
Workplace Health & Safety	Provincial	1-800-531-7555	780-495-7717
Workers' Compensation Board	Edmonton	1-888-576-4444	1-888-417-0442
Alberta Municipal Affairs: Emergency Management Alberta	24 Hour Number	780-422-9000	780-422-1549
Alberta Environment: Pollution Emergency Response	Provincial	1-800-222-6514	780-427-3178
Alberta Sustainable Resource Development	Edmonton	1-877-944-0313	780-427-4407
Environment Canada: Regional Centre	Edmonton	780-951-8720	780-495-2615
Environment Canada: National Emergency Centre	Edmonton	819-953-4168	819-953-4936
Alberta Sustainable Resources: Forests (Fire Reporting)	Edmonton	310-FIRE	780-427-4407
Alberta Infrastructure and Transportation	Edmonton	780-427-2731	780-466-3166
Alberta One-Call	Provincial	1-800-242-3447	N/A

Agency	Area	Phone
CN Rail Emergency Reporting	Provincial	1-800-465-9239
CP Rail Emergency Reporting	Provincial	1-800-551-2553
Media Ready International - Media Consultants	Calgary	1-403-815-3393
Firemaster Oilfield Services Inc.	Red Deer	1-877-342-3473
A.I.R. Monitors	Calgary	403-350-1181
HSE Integrated	Red Deer	1-866-347-3911
SafetyBoss Inc.	Calgary	1-800-882-4967
Intergroup Companies	Calgary	24 Hr 1-866-253-9138

Elmworth 24 Hour Emergency Telephone: Toll Free - 1-866-307-9476 or Local Call: 403-250-0753

Communications Flowchart



When faced with an emergency situation, certain measures must be taken to ensure the safety and protection of all concerned:

- Do not panic. Assess the situation (determine the problem, extent and action required).
- Evacuate, call for help, and notify Supervisor.
- Call emergency services, as required.
- If applicable, administer first aid to the injured.
- Considering the nature of the emergency, take corrective action to bring the emergency under control.
- The On-Scene Commander will provide the following information to the Off-Site Emergency Response Manager and the Corporate Emergency Response Manager:
 - The nature of the emergency.
 - The location and opinion as to the level (Alert, 1, 2 or 3) of emergency.
 - Name, location and phone number.
 - Action already taken.
 - Action proposed.
- Declare the 'All-Clear Message' when the emergency is completely resolved.

CORPORATE EMERGENCY CONTACTS

Name	Title	Office	Cellular	Residence
Ron Smith	On Site Supervisor			
Brad Affleck	Corporate Emergency Response Manager Operations Manager			
Troy Wagner	Corporate Commander COO & Vice President, Engineering			
Ron Hietala	Alternate Corp President			
Mark Gustafson	CEO			
Aly Khan Musani	CFO			
Andy Prefontaine	Land Manager			
Greg Caswell	Consulting Engineer Drilling Engineer			
Wayne Repchuk	Vice President Explorati			
Clarence Campbell				

GOVERNMENT AGENCIES & EMERGENCY SUPPORT SERVICES

Agency	Area	Phone	Fax
RCMP Detachment, Dispatch and General Inquiries	Truro	1-902-895-5351	N/A
Truro Fire Services, Fire Chief	Truro	1-902-895-8645	N/A
Colchester Regional Hospital	Truro	1-902-893-4321	N/A
County of Colchester, Emergency Measures Coordinator	Truro	1-902-897-3182	1-902-895-4642
Cumberland Health Authority, Director of Public Relations	Amherst	1-902-661-1090	1-902-667-1125
EHS Lifelift (Air Ambulance)	Provincial	1-800-743-1334	N/A
Nova Scotia Department of Energy		1-902-424-4575	1-902-424-0528
Occupational Health & Safety Division	Halifax	1-800-952-2687	1-902-424-5640
Nova Scotia Environment and Labour	Truro	1-902-893-0282	N/A
Occupational Health & Safety Division	Halifax	1-800 870 3331	N/A
Nova Scotia Environment and Labour	Halifax	1-902-424-5620	1-902-424-5376
Workers' Compensation Board	Halifax	(24 hr)	
Nova Scotia Emergency Management Office	Halifax	1-800-565-1633	N/A
Nova Scotia Environment and Labour Environmental Emergencies	Halifax	1-800-559-3473	N/A
Nova Scotia Environment and Labour Public Safety/Office of the Fire Marshal	Halifax	1-902-424-2297	1-902-424-0532
Nova Scotia Department of Transportation and Public Works	Halifax	1-800-223-1716	1-902-420-0253
Maritimes & Northeast Pipeline - Call Before You Dig	Halifax	1-819-997-2800	N/A
Environment Canada - National Emergency Centre	Holline	902-426-7231	N/A
Environment Canada - Regional Headquarters	Regional Headquarters	902-426-2308	N/A
Media Ready International - Media Consultants	Calgary	1-403-815-3393	
Safety And Emergency Response Consultants	Calgary	24 Hr: 1-866-253-9138	
Intergroup Companies	Calgary		