



TABLE OF CONTENTS

Document Status i
Distribution List i
Acknowledgement Form i

INTRODUCTION VII

Scope vii
Purpose vii
Company Emergency Report Forms..... vii
Summary of ERP Implementation vii
Determination of Authorities..... viii
Emergency Response Training & Exercises..... viii
Amendments..... ix

1.0 EMERGENCY LEVELS 2

1.1 Emergency Definition 2
1.2 Emergency Criteria 2
 Table 1.1 – Emergency Criteria Matrix and Response 3

2.0 ROLES AND RESPONSIBILITIES 2

2.1 Emergency Response Duties 2
 2.1.1 Responsibilities of Employees, Company Representatives and Contract Operators 2
 2.1.2 Emergency Response Duties and Mutual Aid 2
2.2 Emergency Response Priorities 3
 2.2.1 Initial Emergency Response Procedures 3
 Figure 2.1 – Communications Flowchart – Alberta 3
 Figure 2.2 – Communications Flowchart – Nova Scotia 4
2.3 Roles and Responsibilities by Emergency Level 5
 2.3.1 First Responders 6
 2.3.2 On-Scene Commander 6
 2.3.3 Off-Site Emergency Response Manager 7
 2.3.4 Corporate Emergency Response Manager 8
 2.3.5 Corporate Commander 10
 2.3.6 Receptionist 11
 2.3.7 Roadblock, Air Monitoring, Evacuation/Rover Personnel 12
 2.3.8 Telephone Coordinator/Personnel 13
 2.3.9 Evacuation Reception Centre Representative 14
 2.3.10 Media Consultant 15

3.0 PROPERTIES 2

Wapiti Area – Township 66, Range 8, W6M
Nova Scotia Drilling Program.....

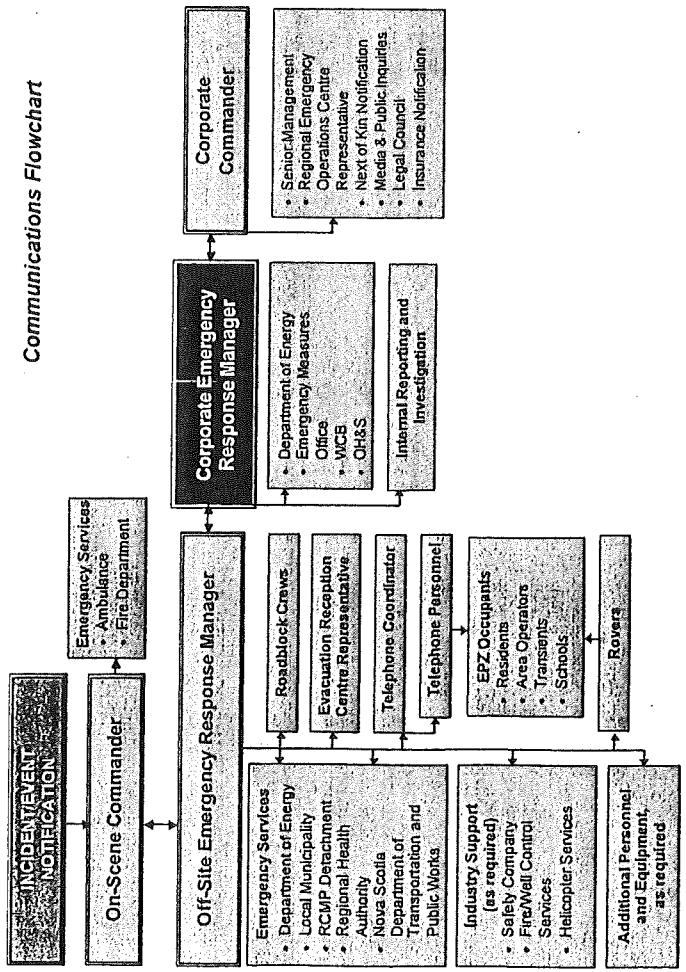
4.0 EMERGENCY TELEPHONE NUMBERS 2

4.1 Elmworth Corporate Emergency Contacts 2
4.2 Elmworth Field Emergency Contacts 2
4.3 Additional Possible Corporate Emergency Response Team Responders 2
4.4 Industry Support Services 3

198

Elmworth 24 Hour Emergency Telephone: Toll Free - 1-866-307-9476 or Local Call: 403-250-0753

Communications Flowchart



When faced with an emergency situation, certain measures must be taken to ensure the safety and protection of all concerned.

- Do not panic. Assess the situation (determine the problem, extent and action required).
- Evacuate, call for help, and notify Supervisor.
- Call emergency services, as required.
- If applicable, administer first aid to the injured.
- Considering the nature of the emergency, take corrective action to bring the emergency under control.
- The On-Scene Commander will provide the following information to the Off-Site Emergency Response Manager and the Corporate Emergency Response Manager:
 - The nature of the emergency
 - The location and opinion as to the level (Alert, 1, 2 or 3) of emergency.
 - Name, location and phone number.
 - Action already taken.
 - Action proposed.
- Declare the 'All-Clear Message' when the emergency is completely resolved.

CORPORATE EMERGENCY CONTACTS					
Name	Title	Office	Cellular	Residence	
Ron Smith	On-Site Supervisor				
Brad Affleck	Corporate Emergency Response Manager				
Troy Wagner	Operations Manager				
	Corporate Commander				
Ron Hietala	COO & Vice President, Engineering				
Mark Gustafson	Alternate Corpor President				
Aly Khan Musani	CEO				
Andy Prefontaine	CFO				
Greg Caswell	Land Manager				
Wayne Repchuk	Consulting Engineer				
Clarence Campbell	Drilling Engineer				
	Vice President Exploration				
GOVERNMENT AGENCIES & EMERGENCY SUPPORT SERVICES					
Agency	Area	Phone	Fax		
RCMP Detachment, Dispatch and General Inquiries	Truro	1-802-895-5351	N/A		
Truro Fire Services, Fire Chief	Truro	1-802-895-8645	N/A		
Colchester Regional Hospital	Truro	1-802-893-4321	N/A		
County of Colchester, Emergency Measures Coordinator	Truro	1-802-897-3182	1-802-895-4642		
Cumberland Health Authority, Director of Public Relations	Amherst	1-802-661-1090	1-902-667-1125		
EHS Lifelift (Air Ambulance)	Provincial	1-800-743-1334	N/A		
Nova Scotia Department of Energy		1-902-424-4575	1-902-424-0528		
Occupational Health & Safety Division	Halifax	1-800-952-2687	1-902-424-5640		
Nova Scotia Environment and Labour		1-902-424-5400			
Occupational Health & Safety Division	Truro	1-802-893-5877	1-802-893-0282		
Nova Scotia Environment and Labour	Halifax	1-800 870 3331	N/A		
Workers' Compensation Board	Halifax	1-902-424-5620	1-902-424-5376		
Nova Scotia Emergency Management Office	Halifax	1-800-565-1633	N/A		
Environmental Emergencies					
Nova Scotia Environment and Labour	Halifax	1-800-559-3473	N/A		
Public Safety/Office of the Fire Marshal	Halifax	1-902-424-2297	1-902-424-0532		
Nova Scotia Department of Transportation and Public Works	Halifax	1-800-223-1716	1-902-420-0253		
Maritimes & Northeast Pipeline - Call Before You Dig	Inquiries	1-819-997-2800	N/A		
Environment Canada - National Emergency Centre	Hotline	902-426-7231	N/A		
Environment Canada - Regional Headquarters	Regional Headquarters	902-426-2308	N/A		
Environment Canada Environmental Protection Branch	Media Consultants				
Media Ready International - Media Consultants	Calgary	1-403-815-3393			
Safety And Emergency Response Consultants	Calgary	24 Hr. 1-866-253-9138			
Intergroup Companies					

5.0 PUBLIC PROTECTION MEASURES2

5.1	Air Monitoring	2
5.1.1	Personal H ₂ S Monitors	2
5.1.2	Mobile Monitoring Unit.....	2
5.1.3	Fixed Continuous Ambient Sensors.....	3
5.2	Isolation of the Emergency Planning Zone	3
5.2.1	Defining the Emergency Planning Zone	3
5.2.2	Incident Site Security.....	3
5.2.3	Roadblocks	4
5.3	Public Safety within the Emergency Planning Zone.....	4
5.3.1	Evacuation Criteria Procedures within the Emergency Planning Zone	4
5.3.2	Prolonged Evacuation	6
5.4	Shelter-In-Place.....	6
5.4.1	Shelter-In-Place Criteria	6
5.4.2	Shelter-In-Place Procedure.....	7
5.5	Ignition.....	7
5.5.1	Ignition Decision	7
5.5.2	Ignition Criteria	7
5.5.3	Ignition Guidelines	8
5.5.4	Ignition Procedures	8
5.5.5	Ignition Team.....	9
5.6	Public Safety Outside the Emergency Planning Zone.....	9
5.6.1	Evacuation Criteria Outside the Emergency Planning Zone	10
5.6.2	Evacuation Procedures Outside the Emergency Planning Zone	10
5.6.3	Shelter-In-Place Outside the Emergency Planning Zone	10

6.0 COMMUNICATIONS2

6.1	Communication Centres.....	2
6.1.1	On-Scene Command Post	2
6.1.2	Mustering Location.....	2
6.1.3	Off-Site Command Centre	2
6.1.4	Corporate Regional Emergency Operations Centre.....	3
6.1.5	Evacuation Reception Centre	3
6.1.6	Emergency Operations Centre	3
6.2	Communication Equipment and Materials.....	4
6.3	Communication with the Media.....	4
6.3.1	Situation Media Statement.....	5
6.3.2	Information That May Be Released To Media.....	5
6.3.3	Information That May <u>NOT</u> Be Released To Media.....	6
6.4	Next of Kin Notification	6
6.4.1	Notification of Injured Person's Family	6
6.5	Elmworth Employees under Supervision of Others.....	7

7.0 POST EMERGENCY PROCEDURES.....2

7.1	Return of Evacuees.....	2
7.2	Post-Event Activities.....	2
7.3	Written Reports.....	3
7.4	Work Resumption Procedures.....	3
7.5	Investigation	3
7.6	Regulatory Reporting Requirements.....	4
7.6.1	EUB – 'Unrefined' Product Releases	4
7.6.2	Alberta Environment – 'Refined' Product Releases	4
7.6.3	Alberta Environment/Environment Canada – 'Hazardous Substances' Product Releases.....	4



8.0 GOVERNMENT ROLES AND RESPONSIBILITIES.....2

8.1 Alberta Agencies..... 2

Figure 8.1 – Government Fan-Out Procedures 2

8.1.1 Alberta Energy and Utilities Board (EUB) 2

8.1.2 County/Municipal Districts – Local Authority 3

8.1.3 RCMP or Municipal Police 5

8.1.4 Alberta Municipal Affairs, Emergency Management Alberta (EMA) 6

8.1.5 Alberta Transportation & Utilities (ATU) 7

8.1.6 Alberta Human Resources and Employment – Workplace Health & Safety (WH&S) 8

8.1.7 Alberta Workers' Compensation Board (WCB) 8

8.1.8 Alberta Environment 9

8.1.9 Alberta Sustainable Resource Development 10

8.1.10 Alberta Community Development 10

8.1.11 Regional Health Authority 11

8.2 Nova Scotia Agencies 11

Figure 8.2 – Government Fan-Out Procedures 11

8.2.1 Department of Energy 11

8.2.2 County/Municipal Districts – Local Authority 12

8.2.3 RCMP or Municipal Police 13

8.2.4 Emergency Management Office 14

8.2.5 Department of Transportation and Public Works 14

8.2.6 Occupational Health and Safety Division (Nova Scotia Environment and Labour) 15

8.2.7 Workers' Compensation Board (WCB) 16

8.2.8 Environmental Monitoring & Compliance Division (Nova Scotia Environment and Labour) 16

8.2.9 Regional Health Authority 17

9.0 COMPANY EMERGENCY REPORT FORMS.....

Incident/Accident Report 2

Incident/Accident Event Log 2

Resident Message Examples 2

A) Resident Notification Message 2

B) Resident Evacuation Message 2

C) Shelter-In-Place Instructions 2

D) Resident Shelter-In-Place Message 2

E) All Clear Message 2

F) Empty Residence Notice 2

Preliminary Media Statement 2

Situation Media Statement 2

Telephone / Evacuation Contact Log 2

Evacuation Reception Centre Registration Form 2

Roadblock Registration Log 2

Daily Expense Claim Form 2

Environmental Monitoring Log 2

Telephone Threat Report 2

External Agency Post Incident Evaluation 2

